

# Separation and disposal methods of paper wastes.

~Please take good care of resources.~

Yaizusikannkyouseiseijichisuisinnkyoukai  
Yaizusikannkyouka  
TEL: 054 (626) 1130

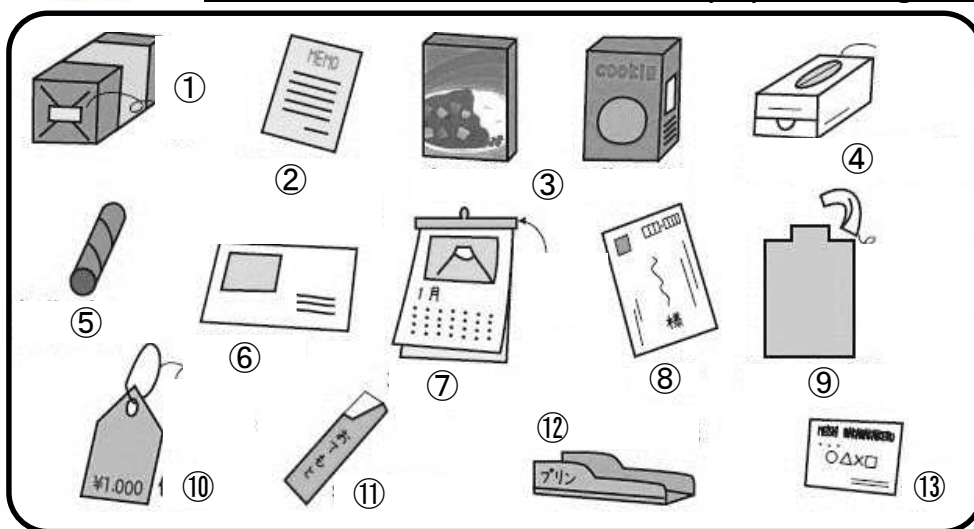
Paper is resource. It can be recycled.

In your trash, garbage, etc. to be burned, there are some mixed resources to be more separable.



## Recyclable paper wastes

Please dispose of recyclable paper wastes on the collection day of recyclables. Please put them in a paper bag or large envelope, otherwise bundle them with paper string and then dispose of them.



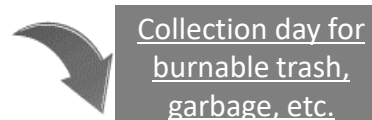
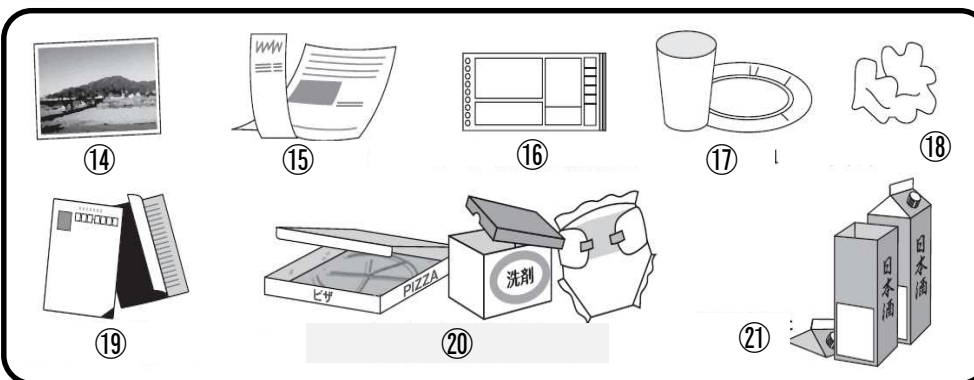
※There are Residents' Associations which have storages in which recyclables can be collected. Please ask your Residents' Association whether it has a storage or not.

※Public recycle stations (so-called as Mini stations) also collect recycles. There are three Mini stations in Koyashiki, Higashimashizu, and Riemon.

## Unrecyclable paper wastes



Those papers which are hard to dissolve in water, dirty, and that have some smells are not recyclable. Please dispose of them as burnable wastes.



## **Recyclable paper wastes**

- ① Wrapping paper (Please remove tape on it, if any.)
- ② Print paper
- ③ Box for packing food and snack.
- ④ Box of tissue paper (Please remove plastic sheet on opening.)
- ⑤ Core of toilet paper
- ⑥ Window envelope, i.e. one with transparent window (Please remove window film.)
- ⑦ Calendar (Please remove metal or plastic part.)
- ⑧ Postcard
- ⑨ Cardboard of dress shirt (Please remove plastic parts.)
- ⑩ Price tag (Please remove plastic part or string.)
- ⑪ Individual paper bag of splittable chopsticks
- ⑫ Cardboard for cups filled with custard pudding or jelly
- ⑬ Business card




## **Unrecyclable paper wastes**

- ⑭ Photos and printing paper for photo
- ⑮ Thermal paper (for example, receipt)
- ⑯ Carbon paper (for example, shipping label of home delivery service)
- ⑰ Paper cup and paper dish
- ⑱ Tissue paper
- ⑲ Postcard which has peelable label
- ⑳ Those papers which are dirty or have some smells (for example, those boxes which had contained pizza, detergent, incense; and used paper diaper)
- ㉑ Paper container with an aluminum foil label

# Separation and disposal methods of plastic wastes


Please check presence or absence of  mark to separate plastic wastes.

Yaizusikannkyoueiseijichisuisinnkyoukai  
Yaizusikannkyouka  
TEL: 054 (626) 1130

There are many people who dispose of plastic bottles or plastic products by mistake on weekly collection day of plastic wastes on which  marks are put. If you dispose of a plastic waste without  mark by mistake, a yellow sticker will be put on it and it will not be collected. Please be sure to dispose of a plastic waste after checking that it has  mark.

## Weekly collected plastic wastes (Collection targets are containers and packages of merchandise.)



※The target plastic wastes have  marks.



①



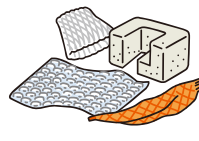
②



③



④



⑤



⑥



Please water-wash or wipe off dirt. When you wash or clean and then dispose of them, they will be recycled as clean products.

## Monthly collected plastic wastes as recyclables (Whole of merchandise is collection target.)

※The target plastic wastes don't have  marks.



⑦



⑧



⑨



⑩




⑪



⑫

Please also dispose of plastic bottles on the monthly collection day of recyclables.



(Please dispose of their cups and labels on the collection day of  mark products.)



## **Weekly collected plastic wastes (Collection targets are containers and packages of merchandise.)**

- ① Bottles (for example, bottles of shampoo, detergent, cosmetic)
- ② Cups (for example, cups of ramen noodle, yogurt, custard pudding)
- ③ Trays (for example, trays of packed lunch, meat, fish, and prepared food)
- ④ Bags (for example, bags of snack, refill shampoo or detergent, bread)
- ⑤ Buffer materials (for example, Styrofoam or Net Cushioning Materials)
- ⑥ Caps (for example, bottle caps of seasoning or soft drink)

## **Monthly collected plastic wastes as recyclables (Whole of merchandise is collection target.)**

- ⑦ Buckets
- ⑧ CDs
- ⑨ Videos
- ⑩ Hangers
- ⑪ Cups
- ⑫ Tableware