



# Koho Yaizu English Version



Father's day  
June 21

Yaizu City Public Relations Newsletter

JUNE (6月 Roku gatsu) / 2026 (令和8年 Reiwa 8 nen) / 〃〇

Yaizu City Hall (YAIZU SHIYAKUSHO) Collaboration Promotion Division (KYODO SUIISHIN KA)  
〒425-8502 On the 3rd floor of City Hall, 2-16-32 Honmachi, Yaizu City TEL: 054-626-2191 <https://www.city.yaizu.lg.jp>

### Schedules of Interpreters:

【City Hall Main Office】 English: 9:00~15:00 on Mon., Wed., and Fri. / Tagalog, Bisaya, and Portuguese: 9:00~16:30 on Monday, Tuesday, Thursday, and Friday / Spanish: 9:00~16:30 on Monday, Wednesday~Friday

※ Interpreters are not available between 12:00~13:00. 【Oigawa Branch Office】 Portuguese: 9:30~11:30 on June 4 and 18 (the first and 3rd Thursdays) / Tagalog and Bisaya: 9:30~11:30 on June 11 and 25 (2nd and 4th Thursdays)

## ■ Summer-season-limited Afterschool Children's Clubs (Kaki gentei hokago jido kurabu) ■

Summer-season-limited Afterschool Children's Clubs that look after primary school students during summer vacation will be open. If you, parent or guardian, want your child to be looked after, please look at the Yaizu City Website. Please apply for a club you want for your child to join in by submitting an application form to a reception desk of Family Affairs Support Division or by doing it directly to the club by June 19, Friday. For more information, please contact to the Family Affairs Support Division (*Katei shien ka*).

【Website】 [https://www.city.yaizu.lg.jp/child-edu/kodomo/mokuteki/day-care/hokago-club/kaki\\_hokago-club.html](https://www.city.yaizu.lg.jp/child-edu/kodomo/mokuteki/day-care/hokago-club/kaki_hokago-club.html)

【Targets】 Those primary school students who meet all of the following requirements, ①~③ :

- ① The child will not go to an Afterschool Children's Club in Yaizu city as of July 1, 2026.
- ② No parent or guardian stays home due to a work etc. in the daytime.
- ③ Parent or guardian can drive the child to and from.

【Contact/Where to apply】 Family Affairs Support Division (*Katei shien ka*)

☎054-631-6978



## ■ "A Child and Childrearing Support System" started. (Kodomo kosodate shienkin seido) ■

From April 2026, a Money-support System to support our children and childrearing started. The support money fund will be burdened by all the generation people and companies. For more information, please view the Website of the Child and Family Agency or contact : 【Website】 <https://www.cfa.go.jp/policies/kodomokosodateshienkinseido>

【Contact】 For a person in charge of National Health Insurance ☎054-626-1113

and a person in charge of the elderly aged 75 or Over ☎054-626-2164, the National Health Insurance & Pension Division (*Kokuho nenkin ka*)

QR code of the Website→



## ■ Renewal procedure for Medical Expense Subsidy System for single-parent family etc.

(Hitorioyakatei to iryohi josei seido no koshin tetsuzuki) ■

We have sent a notification letter about the renewal procedure to the people who are targeted for this subsidy at present. If you think you are qualified, please make the procedure by the deadline below.

【Qualified people】 (1) A mother or father who raises her or his child under 20-years old as a single parent.

(2) A mother or father whose spouse has a serious disability, and who raises her or his under 20-years old child in the family.

(3) An under 20-years old child who has/have no parents.

【Requirement】 No income tax is imposed on a person who supports his/her child and also on his/her family members living together. For more information, please contact.

【Reception deadline】 On Monday, June 8

【Things to bring】 Personal seal, Health Insurance Qualification Certificate, etc.

【Reception places】 Childrearing Support Division (*Kosodate shien ka*) on the second floor, Yaizu City Main Office; or Oigawa Citizen Service Center (*Oigawa shimin sabisu senta*) on the first floor, Oigawa Branch Office

【Contact】 Childrearing Support Division (*Kosodate shien ka*) ☎054-626-1137

## ■ Transfer of Child Allowance (*Jido teate no furikomi*) ■

June 12, Friday is the transfer date of the child allowance. The total amount for the period from April to May, 2026 will be transferred into the account that a recipient designated.

【Contact】 Childrearing Support Division (*Kosodate Shien Ka*) ☎054-626-1137

## ■ Tax payment notice of Municipal, Prefectural, and Forest environmental taxes will be sent (Shimin zeï/Kenmin zeï/Shinrin kankyo zeï no nozei tsuchisho) ■

On Monday, June 15, a tax payment notice of Municipal, Prefectural, and Forest environmental taxes will be sent. When you receive the tax payment notice, please confirm the details of it.

【Target people】 ① People who pay them using the payment slip or automatic transfer (Standard collection)  
② People who pay them by deduction from pension (Special collection from pension)

※Payment deadlines are divided into four times. **For the first term payment, please pay by Monday, July 6.**

You can pay them at a bank, a convenience store or using a smartphone payment app, etc.

【Contacts】 OAs for the Taxation: Taxation Division (*Kazei ka*) ☎054-626-2149

OAs for the Payment: Tax Collection Division (*Nozei sokushin ka*) ☎054-626-2147

## ■ Be careful of heavy rain and typhoon. (Oame / Taifu kiwotsukete) ■

It is from about June that Japan has heavy rain or typhoon season. When it is raining heavily, it might cause dangerous situations such as overflow of a river or collapse of a mountain. Also, a road could come not to be passed through.

Please register yourself to the Yaizu City Disaster Prevention mail system (Bosai meru) from the QR code on the right and then check the disaster or evacuation information.

【Contact】 Disaster Prevention Policy Division (Bosai seisaku ka) ☎054-625-0128



Please use this to register to the Yaizu City Disaster Prevention mail→

## ■ Public job training of “Caregiving” for Long-Term Foreign Residents (Kaigo shokugyo kunren) ■

“Caregiving” is a profession to help the elderly or disabled.

If you learn caregiving through this training, you will become helpful in the caregiving profession:

- You can study Japanese words and phrases used in the caregiving profession.
- You can obtain the license to work as a caregiving worker.
- You can get a job search and job application assistance services.

【Period】 July 1 (Wed.) through September 30 (Wed.), 2026

【Place】 On 5th floor, Shizuoka Rosei Kaikan (5-1, Kurogane Cho, Aoi ward, Shizuoka)  
(It takes eight minutes from JR Shizuoka station on foot.)

【Targets】 Among the “Long-Term Foreign Residents (Teiju Gaikoku Jin)” who live in Shizuoka Prefecture, those who can read and write Hiragana and Katakana characters.

※Please ask Hello Work Yaizu whether you are applicable or not.

【Tuition fee】 ¥0 (But, you must pay 7,326 Yen as a text book cost.)

【How to apply】 By Friday, June 9, 2026, please apply for Hello Work Yaizu. ☎054-628-5155

Days of the week when interpreters stay at the Hello Work→

【Contact】 Shizuoka Campus, Shizuoka College of Technology

(Shizuoka Kenritsu Koka Tanki Daigakuko) (160, Kusunoki, Shimizu Ward, Shizuoka) ☎054-345-3098

Mail: [koutan\\_syakaijin@pref.shizuoka.lg.jp](mailto:koutan_syakaijin@pref.shizuoka.lg.jp)



## ■ Aomine Pool will open (Aomine puru) ■

【Operation period】 From June 27 (Sat.) to September 6 (Sun.)

※It will be close on August 13 (Thus.).

【Operating times】 14:00~17:00 ※But, it is 9:00~17:00 on every Saturday, Sunday, National holiday, and the period from July 21 (Tues.) to August 31, (Mon.).

【Admission charge (for two hours)】 Adults : 300 yen, 3~15 years old kids : 150 yen, and under 2 years old kids : 0 yen

【Contacts】 Aomine Pool: ☎054-629-7811 (It's contactable only during the opening period above.) and Discovery Park Yaizu Suimukan: ☎054-625-0801



## ■ Shall we change our life styles to be better for the earth and nature. ■

(Chikyu ya shizen ni yoi seikatsu ni kaemasho) ■

June is recognized as environment month. Shall we change our lifestyles to those to reduce carbon dioxide (CO2), etc. which cause global warming.

### What we each person can do to reduce CO2

- Reduce burnable trash/garbage (including raw garbage, trash paper, etc.)
- Use a myBag and myBottle. Refrain from using plastic bags or disposable plastic products as much as possible.
- Not to waste the energy resources such as electricity or gas.
- Use a LED lighting and an energy-saving refrigerator or air conditioner.
- Get on a train or bus, ride a bicycle, move by walking when going out, etc.



For more information, please view the Yaizu City Website or contact to us as below:

Website : <https://www.city.yaizu.lg.jp/life/kankyo/eco/education/kankyo-month.html>

【Contact】 Environmental Affairs Division (Kankyo ka) ☎054-626-2153

QR code of Website ↑

## ■ “First Time Japanese Classes” (Hajimete no nihongo kyoshitsu) ■

In the “First Time Japanese Classes”, learners will study Japanese while talking with near-living Japanese people about your country, favorite foods, family members and so on. A person who can understand your mother tongue will help your communication in the classes. The classes are divided into an “Introductory class” for the people who can understand almost no Japanese words and a “Beginner class” for the people who can understand some Japanese words.

In 2025, many people joined these classes. We have also been preparing for enjoyable classes this year. If you are interested in the classes, please note that detailed information will be posted in July issue of this Koho Yaizu. Submission of an application form has not been allowed yet. So, please wait for a while.

Class dates and time: 9:30 am~11:30 am on Sundays between Sept. and Nov. (A total of 10 classes)

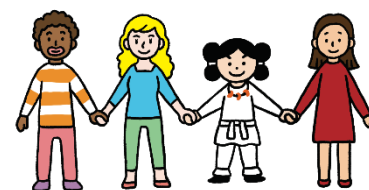
Places: A community center in Yaizu City (a former Public hall) or Yaizu City Hall Main Office.

Course fee: ¥0

Capacity: 20 persons for “Introductory class” and “Beginner class”, respectively

### ● Looking for mother tongue supporters in the “First Time Japanese Classes” ●

The “First Time Japanese Classes” are looking for class supporters who can assist class operation using both Japanese and a student’s mother tongue such as Tagalog, Bisayan, Portuguese, and Spanish etc. If you are interested in the class, please contact us using the telephone number below.



【Contact】 Cooperation Promotion Division (Kyodo Suishin ka) ☎054-626-2191

## ■ Looking for people who want to study “Japanese Language for Working” ■

(Shigoto no tameno Nihongo) ■

The people will study the Japanese language and business manners, etc. used while working.

【Eligible people】 Those who have a status of residence to work in Japan and want to study Japanese language.

【Study methods】 Combination of Face-to-face lessons at Sunlife Yaizu (3-3-12, Nakaminato Yaizu) and on-line remote lessons.

【Dates and time】 From 18:45 to 20:45 on Tuesdays through Fridays between on June 10 (Wed.), 2026 and on September 10 (Thurs.), 2026.

【Application deadline】 On June 24 (Wed.)

【Application method】 Please apply at the Hello Work Yaizu. For more information, please contact below.

【Contact】 Ms. Tsuda, from JICE (Japan International Cooperation Center) ☎080-4336-0956

Mail: tabunka29@softbank.ne.jp (Contact in Japanese, English, Bisayan, Tagalog, and Spanish is available.)

■ **Free Consultation (Muryo sodan)** ■ It might be closed suddenly.

Consultation	Dates and Times	Contacts	Contents
<b>City Tax Payment Consultation [June]</b>	<p>【Mon.~Fri.】 8:30~12:00 and 13:00~16:30                      【Thur. Evening Consultation】                      ← Interpreters are not available.                      17:15~19:00 on June 4, 11, 18 and 25                      【Sunday Consultation】 9:00~12:00 on June 28</p>	<p>Tax Payment Division                      (Nozei Sokushin-ka, Yaizu Shiyakusho) Yaizu City Hall                      ☎054-626-1140                      ☎054-626-2148</p>	<p>Please come if you can't pay the city taxes by the payment deadline.                      ※There are interpreters for Tagalog, Bisaya, English &amp; Portuguese on Sunday.</p>
<b>VISA</b>	8:30~17:15 on Monday~Friday	<p>Information Center (Gaikokujin Sogo Zairyu Information Senta) (Nagoya) ☎0570-013904</p>	<p>Immigration or residential processes, etc. (English, Korean, Chinese, Spanish, etc.)</p>

■ **Medical Institutions and Pharmacies that will be open on Sundays & Holidays** ■

**(June)** ■ 【Open time except for Dentists : 8:30~17:00 (9:00~17:00 for those with ★ mark) , for Dentists: 9:00~15:00 ※Schedule might change.】

**【June 7 (Sun.)】** **NAI-KA(internal)** Nagaoka naika (Nishikogawa 4) ☎629-3205, **SHONI-KA(pediatric)** Sone shonika (Gokahorinouchi) ☎620-8814, **GE-KA(surgery)** Otomi Riumachi seikeigeka (Nakashinden) ☎656-2221, **JIBI-KA(ENT)** Tanaka jibika (Oyaizu) ☎621-5888, **SHI-KA(dentistry)** Kawai shika iin (Nishikogawa 4) ☎626-1184, **YAKKYOKU(pharmacy)** Akagi yakkyoku satsuki-ten (Nishikogawa 4) ☎627-9230, Flower yakkyoku toyoda-ten (Gokahorinouchi) ☎639-6277, Wakakusa yakkyoku Otomi-ten (Nakashinden) ☎623-3939, and Sakura yakkyoku yaizu oyaizu-ten (Oyaizu) ☎620-7500

**【June 14 (Sun.)】** **NAI-KA(internal)** Kawasaki clinic (Echigoshima) ☎629-4976 and Yokoyama shokaki naika★(Shimokosugi) ☎622-0045, **SHONI-KA(pediatric)** Koga clinic (Daikakuji 2) ☎631-7289, **GE-KA(surgery)** Hara seikei geka clinic (Oyaizu) ☎620-8772, **JIBI-KA(ENT)** Mori jibi inkoka★(Fujieda-shi osu 1) ☎635-8687, **SHI-KA(dentistry)** Kawamura shika shinryoshitsu (Honmachi 2) ☎631-4618, **YAKKYOKU(pharmacy)** Echigoshima yakkyoku (Echigoshima) ☎631-4452, Daikakuji yakkyoku (Daikakuji 2) ☎629-3789, Sakura yakkyoku nishi yaizu-ten (Oyaizu) ☎621-4606, Cosmo yakkyoku (Honmachi 2) ☎621-3771, and Shimokosugi yakkyoku (Shimokosugi) ☎664-2151

**【June 21 (Sun.)】** **NAI-KA(internal)** Sato iin (Tajiri) ☎624-4804, **NAI-KA(internal) / SHONI-KA(pediatric)** Ishikawa iin (Tajiri) ☎624-4321, **GE-KA(surgery)** Yaizu ekimae seikei geka riumachi rihabiri clinic (Nakaminato 1) ☎621-5511, **JIBI-KA(ENT)** Yaizu 6 chome jibi inkoka (Yaizu 6) ☎620-6001, **GAN-KA(ophthalmology)** Ozumi ganka iin (Ozumi) ☎623-0330, **SHI-KA(dentistry)** Ai shika clinic (Daikakuji 1) ☎626-8841, **YAKKYOKU(pharmacy)** Flower yakkyoku tajiri-ten (Tajiri) ☎656-3755, Yunisumairu yakkyoku Tajiri-ten(Tajiri) ☎656-2233, Subaru yakkyoku (Yaizu 6) ☎627-2831, and Akagi yakkyoku ozumi-ten(ozumi) ☎625-7777

**【June 28 (Sun.)】** **SHONI-KA(pediatric)** Shinohara iin (Honmachi 5) ☎628-3070, **NAI-KA(internal)/GE-KA(surgery)** Community hospital koga byoin (Daikakuji 2) ☎628-5500, **JIBI-KA(ENT)** Fujieda aoba jibi inkoka★(Fujieda-shi suehiro1) ☎050-3033-4284, **SHI-KA(dentistry)** Harazaki shika ojima clinic (Ojima) ☎623-3777, **YAKKYOKU(pharmacy)** Daikakuji yakkyoku (Daikakuji 2) ☎629-3789

■ **Medical Institutions that provide Night Consultation** (Yakan Shinryo Iryo Kikan) ■

**Place:** Shida Haibara Community Emergency Medical Center (*Shida Haibara Chiiki Kyukyu Iryo Senta*), (362-1, Setoaraya, Fujieda-shi) ☎054-644-0099 **Clinical Departments:** Internal Medicine and Pediatrics **Operating Time:** 19:30~22:00 on Mon.-Fri./ 19:30~7:00 am next morning on Sat. and Sun. The Center will be open even in Year-end and New Year Period. ※Only pediatric department is available after 22:00 on the following days: **<on June 6 (Sat.), 14 (Sun.), 20 (Sat.), 28 (Sun.), and July 4 (Sat.)>** **Things to bring:** Either of the My number Insurance Card (Maina Hokencho) or Eligibility Confirmation Certificate (Shikaku kakunin sho). Child medical care certificate, Mother and Child Health Handbook, and Prescription record book, etc.

Home page of Yaizu International Friendship Association on Facebook  
 (Yaizushi kokusai yuko kyokai Facebook)

The home page of Yaizu International Friendship Association on Facebook informs you of such information as enjoyable events, Japanese language classes, useful information to you etc. Please register on it, click a "Like" button, and share it with your friends.

【Contact】 Collaboration Promotion Division (Kyodo Suishin Ka) ☎054-626-2191

