



How to Put Out Trash in Yaizu City



Trash Control Section, Yaizu City Hall ☎ 054-626-1130(Japanese only)
Citizen Collaboration Section ☎ 054-626-2191

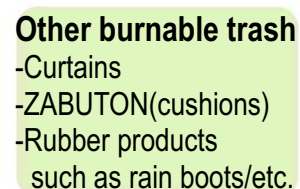


☆ Please put out your trash in the designated site by **8 a.m.** on collection days.
☆ Please put your trash in **"a transparent or semi-transparent trash bag"** and close it before putting out. ☆ Please make sure to sort out all the domestic trash.

① Burnable trash (twice a week)

Please do not put **cans, glass bottles, PET bottles or metal materials** with the burnable trash.

Depending on where you live, trash collection days varies.



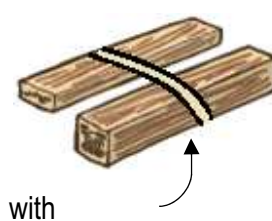
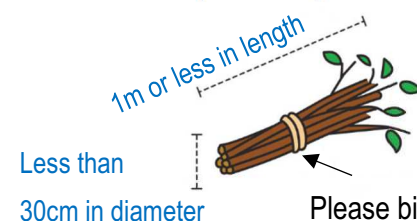
make sure they are not hot before disposal.

② Wood debris/Pruned branches (twice a week)

You can dispose of them on the same collection days as burnable trash.

☆ Pruned branches/Wood blocks : Please bind them with **wire, paper string, or hemp string.**

☆ Fallen leaves/Wooden debris : Please place them in "a transparent or semi-transparent bag" and close it before putting out.



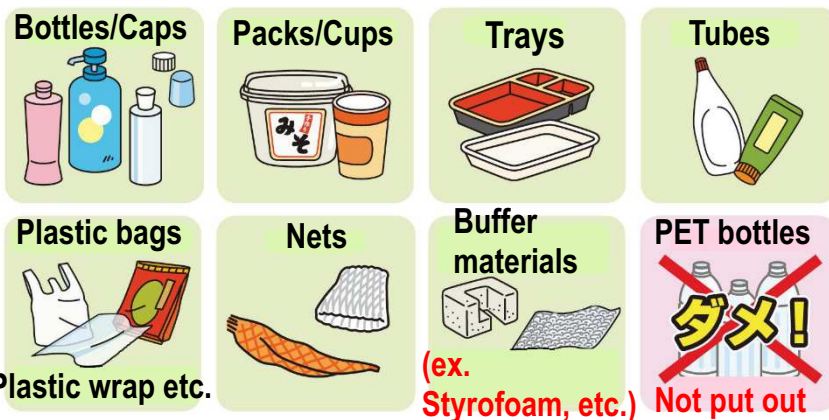
③ Plastic Marked Items (once a week)

You can put out in the same trash collection site as burnable trash.

☆ **Rinse or wipe the inside before disposal.**



You cannot put out items if they are without this mark.



Collection Days of Items with Plastic Mark	
Monday	Kogawa 12, Kogawa 13, Minato 14, Minato 23, Wada 22
Tuesday	Yaizu 2, Yaizu 4, Yaizu 5, Yaizu 6, Yaizu 7
Wednesday	Yaizu 1, Yaizu 3, Toyoda 8, Toyoda 9, Kogawa 11 Oigawa Area
Thursday	Ootomi18, Ootomi19, Ootomi20, Wada21
Friday	Toyoda10, Higashimashizu15, Higashimashizu16, Higashimashizu17

Mini-Stations

[Operating hours]

9am ~ 4pm Thursday to Sunday (includes public holidays).

Closed (Fri.) 27th December ~ (Fri.) 3rd January.

[Collection Items]

Paper, bottles, cans, PET bottles, plastic products, used cooking oil for disposal, fluorescent tube bulbs, light bulbs, batteries, re-useable used clothing, (non-re-useable) used clothing, used small home appliances. *Metal objects, glass, pottery can not be collected. (However, cutlery such as plates, cups, spoons, forks and frying pans, pots, vases can be brought.)

[Location] The following 3 places

① Mini-Station HIGASHIMASHIZU (176 Nakazato)



② Mini-Station KOYASHIKI (573 Koyashiki)



③ Mini-Station RIEMON (856-1 Riemon)



Attention Please do not put out the followings as burnable trash. (They are not collected as burnable trash.)



Used Paper items
*Please puncture spray cans before disposal.
*Please put used cooking oil in a PET bottle and put it out.

Cans (metals)

Glass bottles

PET bottles

Used cooking oil/Glasses/ Fluorescent light bulbs & tubes/ Porcelain products/ Other non-burnable items

Take Your Trash Individually to:

④ Items Not Collected on Regular Collection Days

◇Laptop computers and small electric appliances

You can put them in the Recyclable Items Collection Boxes.

《The Recyclable Items Collection boxes are located at 》



@Lobby, 2nd floor of City Hall's main building

@3 sites of Mini-Stations

※Items larger than the slot of the boxes (40cm×20cm) cannot be collected.

◇Desktop Computers



The City cannot collect them.

Please consult electrical appliances shops or electronics retail stores.

◇Specified Electric Home Appliances



TV's



Refrigerators



Washing machines



Air conditioners

The City cannot collect them.

Please consult electrical appliances shops or electronics retail stores.

◇Trash large in scale or volume Burnable trash mixed with metals

After sorting, please take the trash to the following facilities individually.

Burnable trash Takayanagi Cleaning Factory (2338-1 Takayanagi, Fujieda-shi)

Metals Recycle Center (833-2 Utsutani, Okabe-cho, Fujieda-shi)

《Business Hours》 9:00 a.m. to 11:00 a.m., 1:00 p.m. to 4:00 p.m.

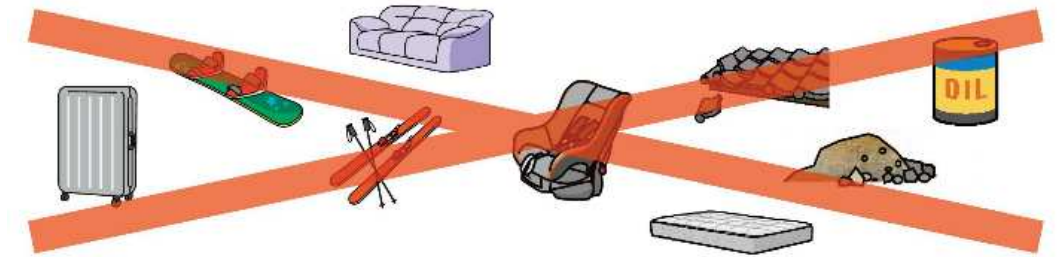
《Fees》 146 yen per 10kg, when the total weight is 50kg or over.

◇Trash unable to be sorted out (mixture of burnable trash and metals)

◇Other trash that are unable to be sorted out (suitcases, chemicals, gasoline, soil, etc.)

Please contact private operators for disposal. There is a charge for disposal.

Please ask Trash Control Section if you cannot find a private operator.



★Quick Reference Chart: Find Your Neighborhood Association from Your Address & Recyclable Trash Collection Days for Each Neighborhood Association (2024)

JICHIKAI		4 Apr	5 May	6 Jun	7 Jul	8 Aug	9 Sep	10 Oct	11 Nov	12 Dec	1 Jan	2 Feb	3 Mar
1	IWASHIGASHIMA, JONOKOSHI, KITAHAMADORI, HONMACHI 2 CHOME 11~15.18.19, HONMACHI 3 CHOME 7 ~13, HONMACHI 4 CHOME 11~21, HONMACHI 5 CHOME 7 ~15, HONMACHI 6 CHOME 7 ~18	15	17	13	10	8	11	10	8	5	10	7	10
2	YAIZU 1 ~ 6 CHOME, KOGAWASHINMACHI 1 CHOME 1, HONMACHI 2 CHOME 5.6, HONMACHI 3 CHOME 1 ~ 6, HONMACHI 4 CHOME 1 ~10, HONMACHI 5 CHOME 1 ~ 6, HONMACHI 6 CHOME 1 ~ 6, YAIZU	15	17	13	10	8	11	10	8	5	10	7	10
3	ARAYA, SAKAEMACHI 1 ~ 4 CHOME, SAKAEMACHI 5 CHOME 1 ~ 3.8 ~12, SAKAEMACHI 6 CHOME 1.3.7 ~ 9 HONMACHI 1 CHOME, HONMACHI 2 CHOME 1 ~ 4.7 ~1016.17.20~22, EKIKITA 2 CHOME 4 ~18, EKIKITA 3 CHOME 8 ~13	16	20	14	11	9	12	11	11	6	14	10	11
4	SHIOTSU, SAKAEMACHI 5 CHOME 4 ~ 7.13~16, SAKAEMACHI 6 CHOME 1 ~17, HONMACHI 2 CHOME 5, YAIZU 6 CHOME 8	16	20	14	11	9	12	11	11	6	14	10	11
5	NAKAMINATO 1 ~ 6 CHOME, EKIKITA 1, EKIKITA 2 CHOME 1 ~ 5, EKIKITA 3 CHOME 1 ~ 9, EKIKITA 4 ~ 5 CHOME, SAKAEMACHI 1 CHOME 1 - 3	17	21	17	12	19	13	15	12	9	15	12	12
6	OMURASHINDEN, DAIEICHO 1 ~ 3 CHOME, EKIKITA 2 CHOME16.18, EKIKITA 3 CHOME11~29, OMURA 1 ~ 3 CHOME	17	21	17	12	19	13	15	12	9	15	12	12
7	(※)YAGUSU, YAGUSU 1 ~ 4 CHOME, DAIKAKUJI, DAIKAKUJI 1 ~ 3 CHOME, ECHIGOSHIMA, (※)SAKAMOTO	23	24	20	19	22	19	18	15	12	20	17	17
8	SANGAMYO	24	27	21	22	23	20	21	18	13	21	18	18
9	GOKAHORINOUCI, YANAGIARAYA, OYAIJU, KOYASHIKI, NISHIYAIZU	26	29	25	24	27	25	23	20	17	23	20	21
10	KOHIJI, HOHUKUJIMA	23	24	20	19	22	19	18	15	12	20	17	17
11	HIGASHIKOGAWA 1 ~ 2 CHOME, HIGASHIKOGAWA 3 CHOME 1.2.7 ~ 16, HIGASHIKOGAWA 5 ~ 8 CHOME, NISHIKOGAWA 5 ~ 8 CHOME, KOGAWASHINMACHI 1 CHOME 2, KOGAWASHINMACHI 2 CHOME 1.2, KOGAWASHINMACHI 3 CHOME 1, (※)KOGAWA, YOSOJI	25	28	24	23	26	24	22	19	16	22	19	19
12	KOGAWASHINMACHI 1 CHOME 3 ~14, KOGAWASHINMACHI 2 CHOME 3 ~14, KOGAWASHINMACHI 3 CHOME 2 ~ 9	24	27	21	22	23	20	21	18	13	21	18	18
13	(※)KOGAWA, HIGASHIKOGAWA 3 CHOME 3 ~ 6, HIGASHIKOGAWA 4 CHOME, KOGAWASHINMACHI 4 ~ 5 CHOME	24	27	21	22	23	20	21	18	13	21	18	18
14	ISHIZU, ISHIZUMUKAICHO, ISHIZUNAKACHO, ISHIZUMINATOCHO	12	16	12	9	7	10	9	7	4	9	6	7
15	MUCHIUSHI, SEKIGATA, KATANOKAMI, (※)SAKAMOTO, ISHIWAKIKAMI, ISHIWAKISHIMO, OBAMA, NOAKI, HANAZAWA, YOSHIZU, TAKASAKI	22	23	19	18	21	18	17	14	11	17	14	14
16	NAKAZATO, OKATOME, (※)YAGUSU	18	22	18	17	20	17	16	13	10	16	13	13
17	HAMATOME, HAMATOME 1 ~ 4 CHOME	18	22	18	17	20	17	16	13	10	16	13	13
18	HON-NAKANE, NAKANE, NAKANESHINDEN	2	1・31	27	26	29	27	25	22	19	27	25	25
19	NAKASHINDEN, OZUMI, SAN-UEMONSHINDEN, JICHO-UKESHO	1・30	30	26	25	28	26	24	21	18	24	21	24
20	NEGISHIMA, DOBARA, MIWA, OJIMA, OJIMASHINDEN	3	2	3・28	29	30	30	28	25	20	28	26	26
21	SOUEMON, ISSHIKI	4	8	4	1・30	/	2	1・29	26	23	29	27	27
22	TAJIRI, SUMIREDAI 1 ~ 2 CHOME	5	9	5	2・31	/	3	2・30	27	24	30	28	28
23	TAJIRIKITA, SHIMOODA, SHIMOODANAKAMACHI, KITASHINDEN	11	15	11	8	6	9	8	6	3	8	5	6
Dai 1	NAKAJIMA, AIKAWA, KAMIIZUMI, SHIMOEDOME, KAMISHINDEN, TSUTSUJIDAIRA, NISHIJIMA	8	10	6	3	1	4	3・31	28	25	31	/	3・31
Dai 2	HABUCHI, RIEMON, YOSHINAGA, MUNADAKA	9	13	7	4	2	5	4	1・29	26	/	3	4
Dai 3	TAKASHIDEN, KAMIKOSUGI, FUJIMORI, SHIMOKOSUGI	10	14	10	5	5	6	7	5	2	7	4	5